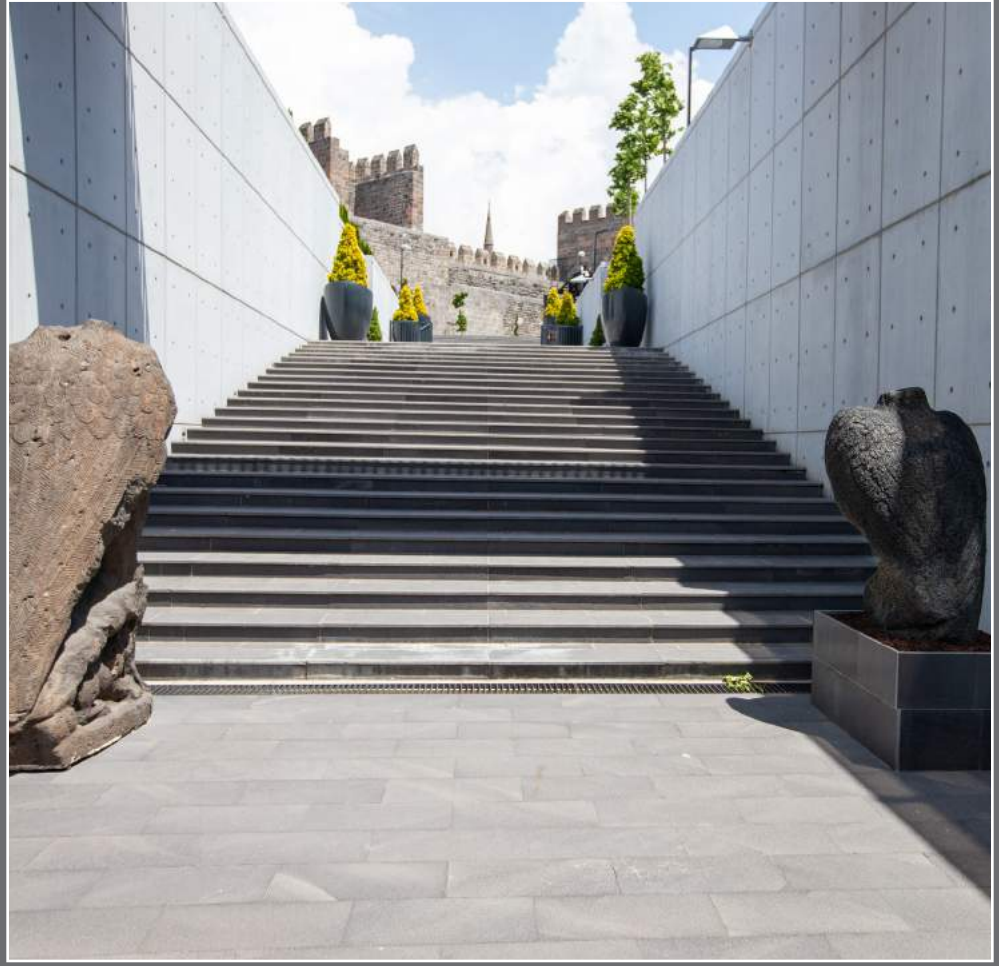




GENERAL DIRECTORATE FOR  
CULTURAL ASSETS AND MUSEUMS



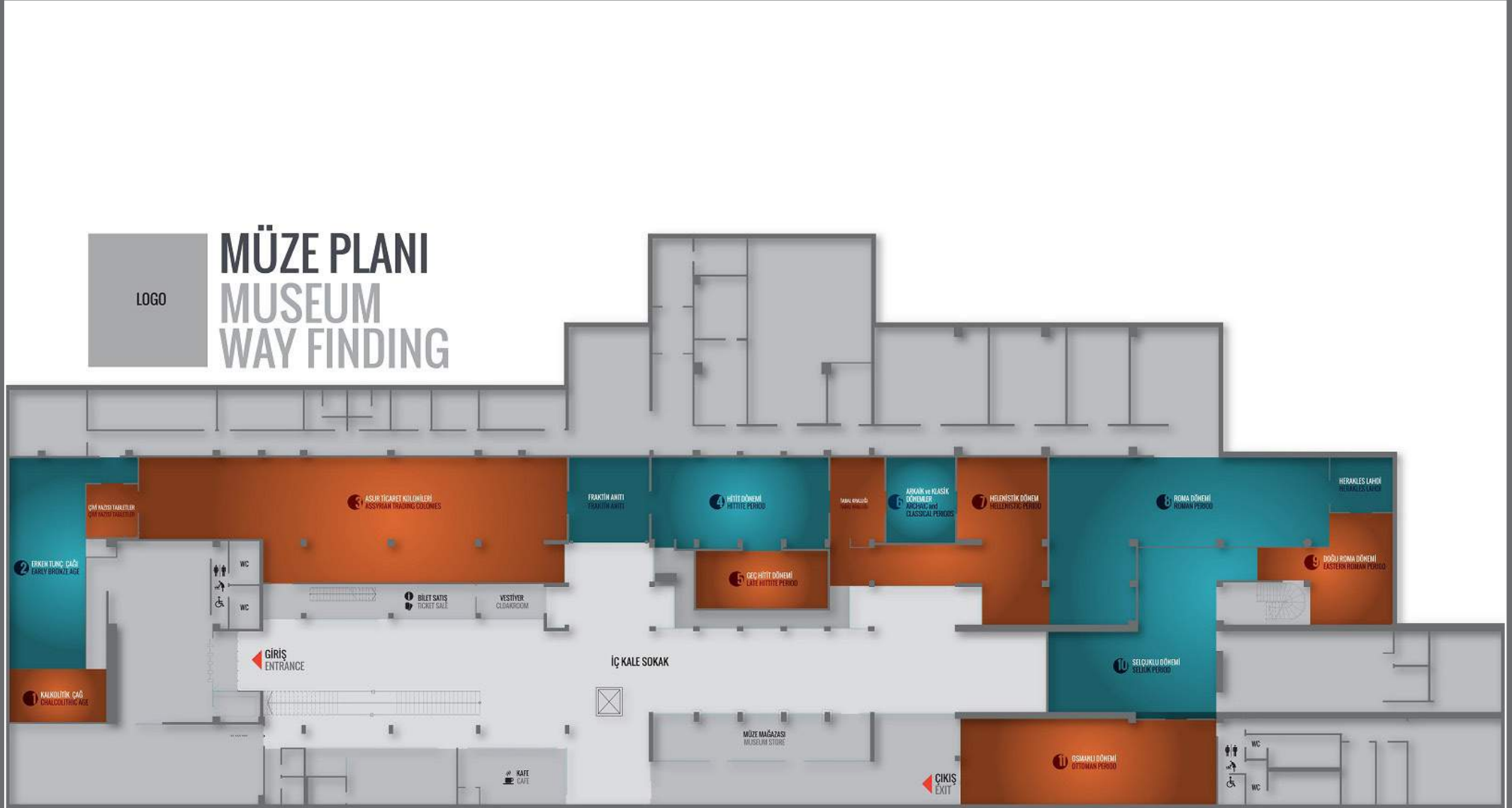
# KAYSERİ ARCHAEOLOGY MUSEUM



Visiting Hours	
Opening Time: 08:00	Open everyday.
Closing Time: 17:00	
Address: Cumhuriyet Mahallesi, Kaleiçi Meydan Kümeevler, No: 1, Melikgazi / KAYSERİ	
Please visit the web site for up-to-date information.	

[f TurkishMuseums](#) [officialturkishmuseums](#) [t TurkishMuseums](#) [v TurkishMuseums](#) [o TurkishMuseums](#)

[www.turkishmuseums.com](http://www.turkishmuseums.com) [www.muze.gov.tr](http://www.muze.gov.tr)



## MÜZE PLANI MUSEUM WAY FINDING

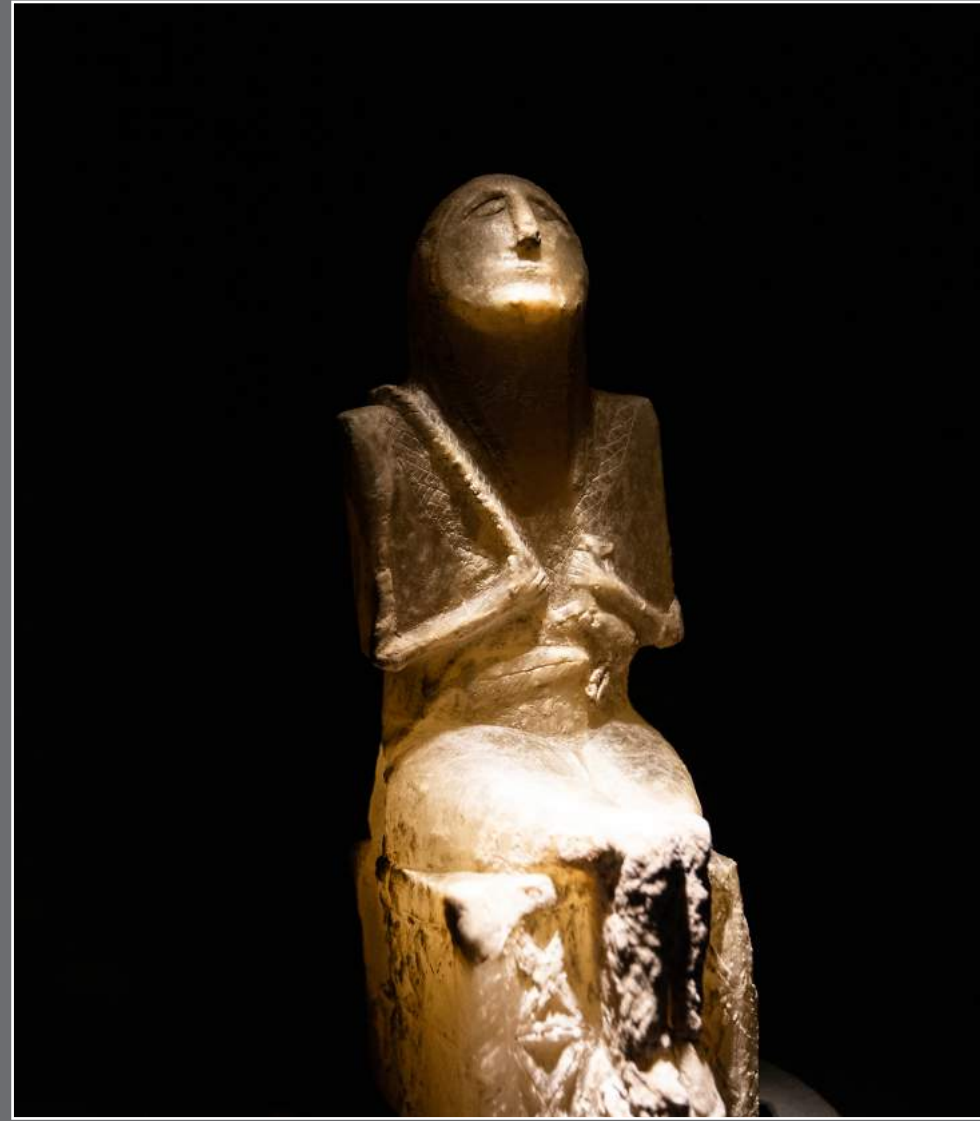
LOGO





Kayseri Museum, which was put into service as a museum in the Hant Hatun Madrasa on March 1, 1930, was opened to visitors in its new building in 1969 with the completion of the new museum building in Melikgazi district, Gültepe neighborhood, Kışla street.

With the protocol signed between the Ministry of Culture and Tourism and Kayseri Metropolitan Municipality dated 30.04.2012, it was decided to move our museum building, which was inadequate, to a new building to be built by the Metropolitan Municipality in the Kayseri Citadel.



Construction and Restoration works were started by Kayseri Metropolitan Municipality in 2013 and completed in May 2019 and the building was handed over to the Ministry of Culture and Tourism. Our directorate started the moving of the artefacts to the new museum and the new exhibition arrangement in May and they were completed in September. Our new Museum was officially opened to visitors on Saturday, 19.10.2019 with the participation of our President Mr. Recep Tayyip ERDOĞAN and the participation of our General Manager Mr. Gökhan YAZGI.



There are a total of 13 exhibition halls namely Chalcolithic Period Hall, Early Bronze Period Hall, Tablet Hall, Assyrian Trade Colonies Period Hall, Hittite Period Hall, Late Hittite Period Stone Artefacts Hall, Archaic-Classical Period Halls, Hellenistic Period Hall, Roman Period Hall, Eastern Roman Period Hall, Seljuk Period Hall and Ottoman Period Hall where the artefacts found in Kayseri and its surroundings and brought to our Directorate and the artifacts found in the Kültepe Kaniş/Neşa excavations, which were excavated continuously from 1948 to the present, in Kültepe Karum/Kaniş Ruins, 22 km east of Kayseri are exhibited. There is also a temporary exhibition hall where temporary exhibitions are held.

