



## ŞEHİT CUMA DAĞ NATURAL HISTORY MUSEUM



GENERAL DIRECTORATE OF MINERAL RESEARCH AND EXPLORATION

ŞEHİT CUMA DAĞ  
NATURAL HISTORY MUSEUM



Turkey's first national Natural History Museum was opened in February 7, 1968.

In the museum; rich collections of minerals, rocks, fossils, stuffed animals and mining history specimens compiled from MTA's field works or donated by various organizations and individuals, supplied from inside and outside the country, are exhibited.

MTA Şehit Cuma Dağ Natural History Museum, which serves with contemporary museum understanding and increases the number and variety of samples every year; carries out scientific researches with modern laboratory infrastructure and expert staff as well as educational activities, guidance and introductory services.



GENERAL DIRECTORATE OF MINERAL RESEARCH AND EXPLORATION

ŞEHİT CUMA DAĞ  
NATURAL HISTORY MUSEUM

On the entrance floor of the museum; Solar System, Lightning Stone and Meteorite samples, Science on Sphere (SOS) and Planetarium, Visual Impairment Section which is the first in our country, Children's Education Field, Giftshop, Conference and Exhibition Hall are located.

On the first floor; dinosaur samples that lived millions of years ago, diorama section, vertebrate and invertebrate animal fossils, cave model, foot prints of people lived in Manisa-Kula during the Holocene period and stone tools belonging to Prehistoric Period are exhibited. The section where the giant rhinoceros specimens are located also attracts a great deal of attention.

On the second floor; gemstones, minerals, rocks, mines and mining history in Anatolia are exhibited.

The opening of the Science Tunnel in the third floor was built in 2017. In the Science Tunnel, the geological heritage areas of our country, the safari parks of South Africa, the eye-catching colorful world of flowers and biodiversity of underwater reefs can be watched.

In Şehit Mehmet Alan Energy Park, there are models showing production and consumption forms of oil, natural gas, coal and renewable energy sources and training sections for efficient use of energy.



Giant Rhinoceros

GENERAL DIRECTORATE OF MINERAL RESEARCH AND EXPLORATION

ŞEHİT CUMA DAĞ  
NATURAL HISTORY MUSEUM



Maraş Elephant



GENERAL DIRECTORATE OF MINERAL RESEARCH AND EXPLORATION

ŞEHİT CUMA DAĞ  
NATURAL HISTORY MUSEUM



Wind Turbine



Drilling Tower



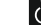
## ŞEHİT CUMA DAĞ NATURAL HISTORY MUSEUM

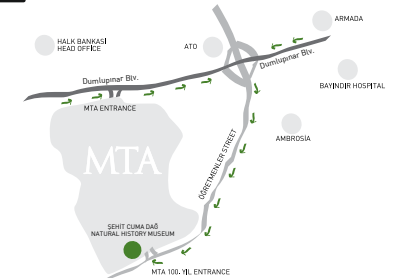


GENERAL DIRECTORATE OF MINERAL  
RESEARCH AND EXPLORATION  
ŞEHİT CUMA DAĞ  
NATURAL HISTORY MUSEUM

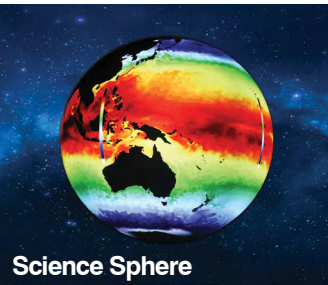
Üniversiteler Mahallesi  
Dumlupınar Bulvarı No:139  
06800 Çankaya - Ankara - Türkiye  
Tel: 0312 201 23 96 - 97  
www.mta.gov.tr

The Museum is open daily from 09.00 am to 17.00 pm except on Monday.

 Appropriate for disabled visitors.







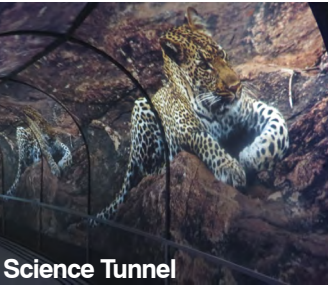
Science Sphere



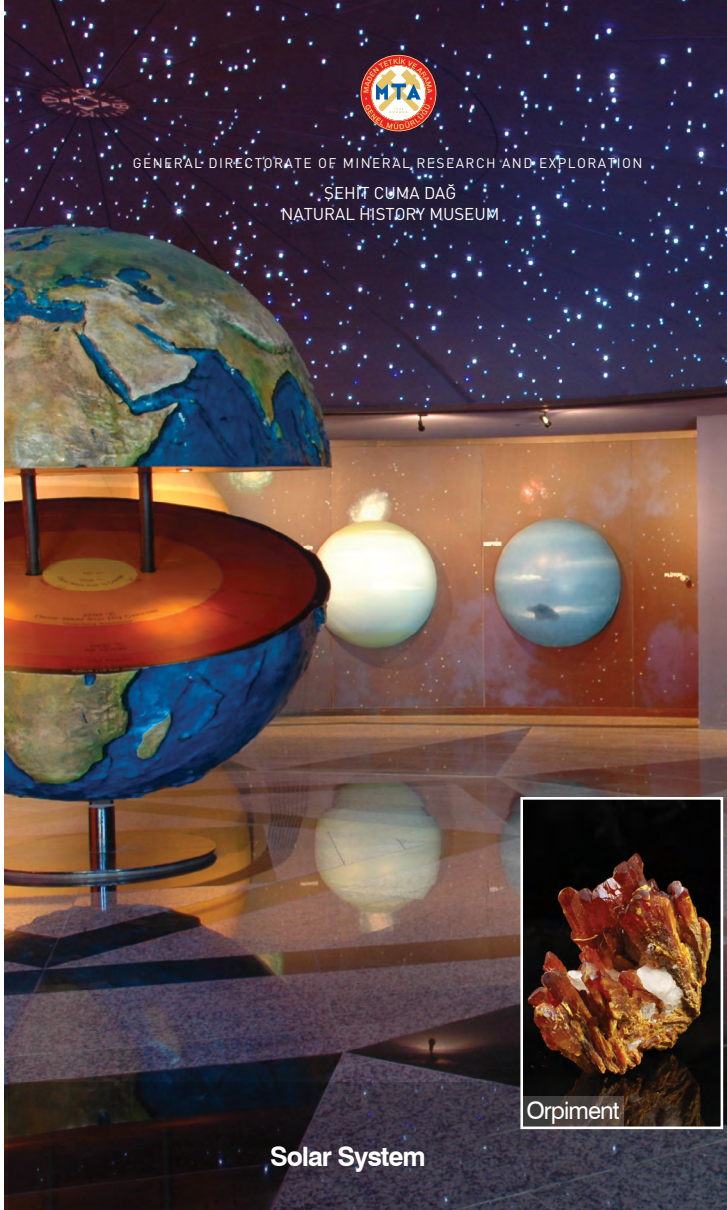
Planetarium



ŞEHİT CUMA DAĞ  
NATURAL HISTORY MUSEUM



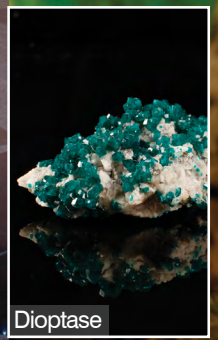
Science Tunnel



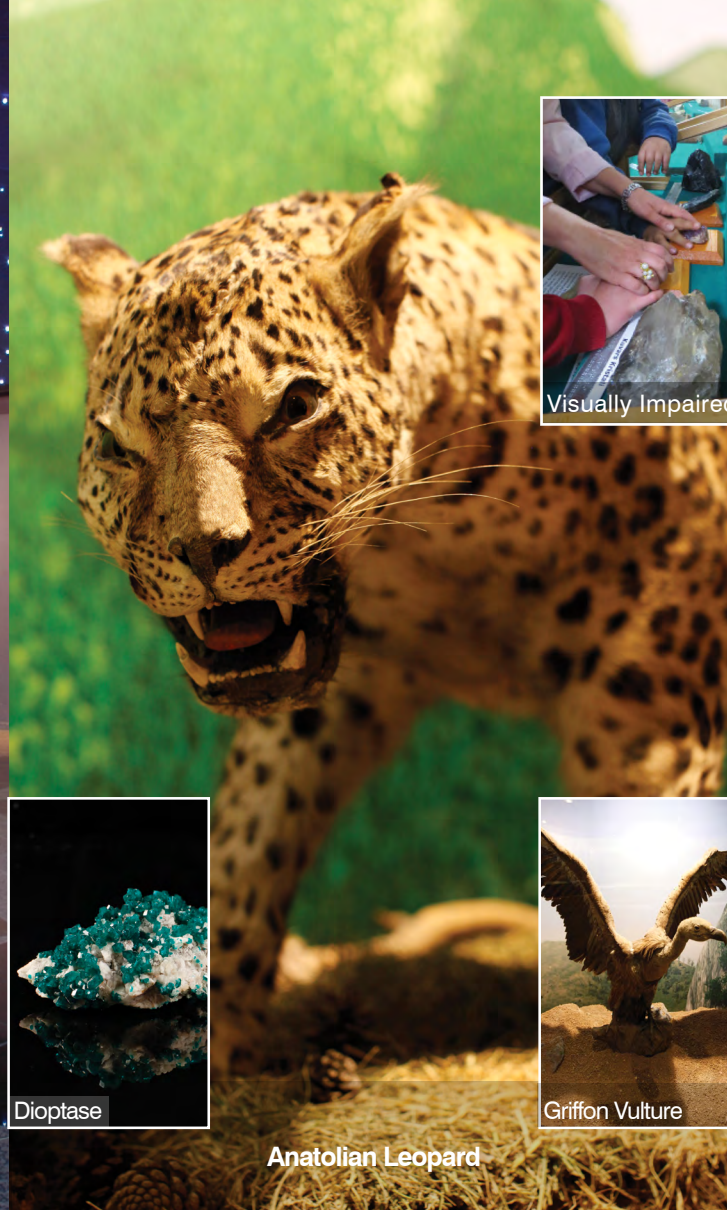
Solar System



Orpiment



Diopside



Anatolian Leopard



Griffon Vulture



Visually Impaired Section



Foot Print



Smithsonite



Cave Model



ŞEHİT CUMA DAĞ  
NATURAL HISTORY MUSEUM



www.mta.gov.tr

ŞEHİT CUMA DAĞ  
NATURAL HISTORY MUSEUM

