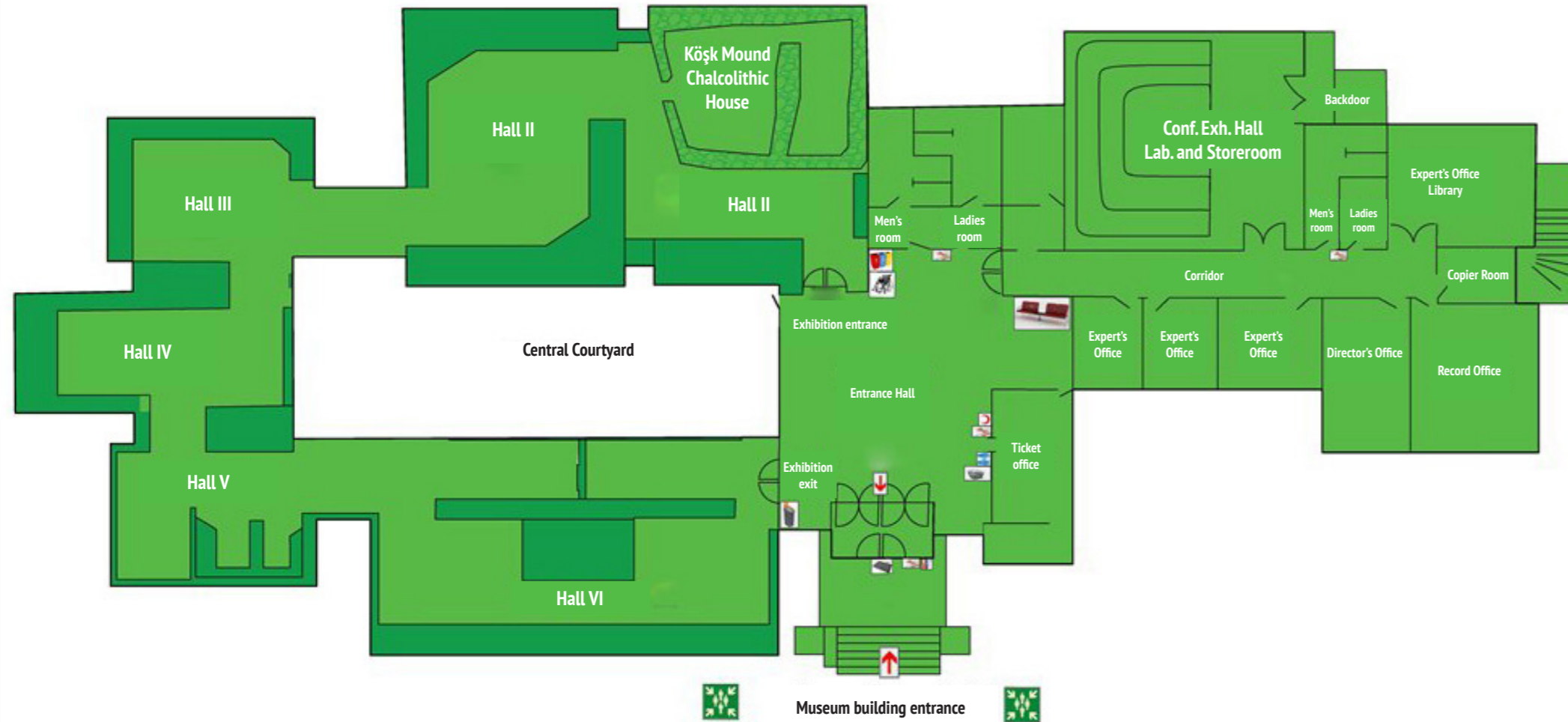


# Museum Floor Plan



## Visiting Hours

**April 1 - October 1**  
 Opening Time: 08:00  
 Closing Time: 17:00  
 Ticket Office Closing Time: 16:45

**2 October - 31 March**  
 Opening Time: 08:30  
 Closing Time: 17:30  
 Ticket Office Closing Time: 17:15

Open everyday.

**Address:** Yukarı Kayabaşı Mahallesi, Dışarı Camii Sok No:11, 51000 Merkez/Niğde

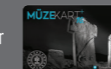
Please visit the web site for up-to-date information.

[f TurkishMuseums](#)
[officialturkishmuseums](#)
[TurkishMuseums](#)
[TurkishMuseums](#)
[TurkishMuseums](#)

www.turkishmuseums.com



www.muze.gov.tr



444 MÜZE (6393)  
 www.muze.gov.tr

GENERAL DIRECTORATE FOR  
 CULTURAL ASSETS AND MUSEUMS



# NIĞDE MUSEUM

A JOURNEY TO THE ARCHAEOLOGY OF CENTRAL ANATOLIA



**HALL I:** Obsidian tools collected from Kaletepe Obsidian Workshop, Pınarbaşı Mound, Köşk Mound and Tepecik Mound Excavations and unique artefacts, tomb finds, God and Goddess statuettes, anthropomorphic vase and one-to-one simulation of the "Köşk Mound Chalcolithic House" are displayed.

**HALL II:** Findings from the mining village recovered in the Göltepe Mound excavations, gallery entrance in the Kestel tin mine, Hocker-style burial and dead gifts, artefacts found in Acem Mound, Ulukışla and palace findings and lid vases collected during the Assyrian Trade Colonies Age Acem Mound excavations are on display.

**HALL III:** The stelae of storm and fertility gods of the Nahita and Tuvanuva kingdoms of late Hittite city states, inscriptions written with Hittite hieroglyphs, findings from Kaynarca Tumulus, ceramics from Phrygian Period and "Göllüdağ Lion" are on display.

**HALL IV:** It is reserved for the Hellenistic, Roman and Byzantine findings. Findings recovered from Tepebağları, Porsuk Mound and Acemhöyük excavations and terracotta and glass artefacts, impressions of seal, Roman and Byzantine artefacts are housed. There are finds from the excavations of Tepebağları, Porsuk Mound and Acem Mound, as well as terracotta and glass artifacts, seal impressions, artefacts from the Roman and Byzantine Periods.

**HALL V:** Coin minting technique and general descriptions, Greek, Hellenistic, Roman, Byzantine and Islamic-Ottoman period coins, Seljuk Period Lu'lu'a Mine and Tepebağları Late Hellenistic Period coin sets are exhibited.

**B-Mummy Section:** The "Nun Mummy" in the Ihlara Valley of Aksaray and 4 children's mummies collected from the Çanlı Church are exhibited.

**HALL VI:** Weapons, manuscripts, writing sets, lighting tools, carpets, rugs, finials, jewelry and a tray of the Kaçar Turks are exhibited. A theme of dinner in a Niğde house in the previous century is also created in the Hall.



Museum activities in Niğde started with the use of Akmedrese as the warehouse of the Istanbul Archaeology Museums during the World War II. It was opened to visitors as Akmedrese Niğde Museum in 1957. The museum moved to its new building in 1977, and its first exhibition was organized in 1982. It was put into service again in 2001 after the new exhibition-arrangement in the museum upon need. There are 6 exhibition halls in the museum, presented in chronological order from the Paleolithic Age to the present.